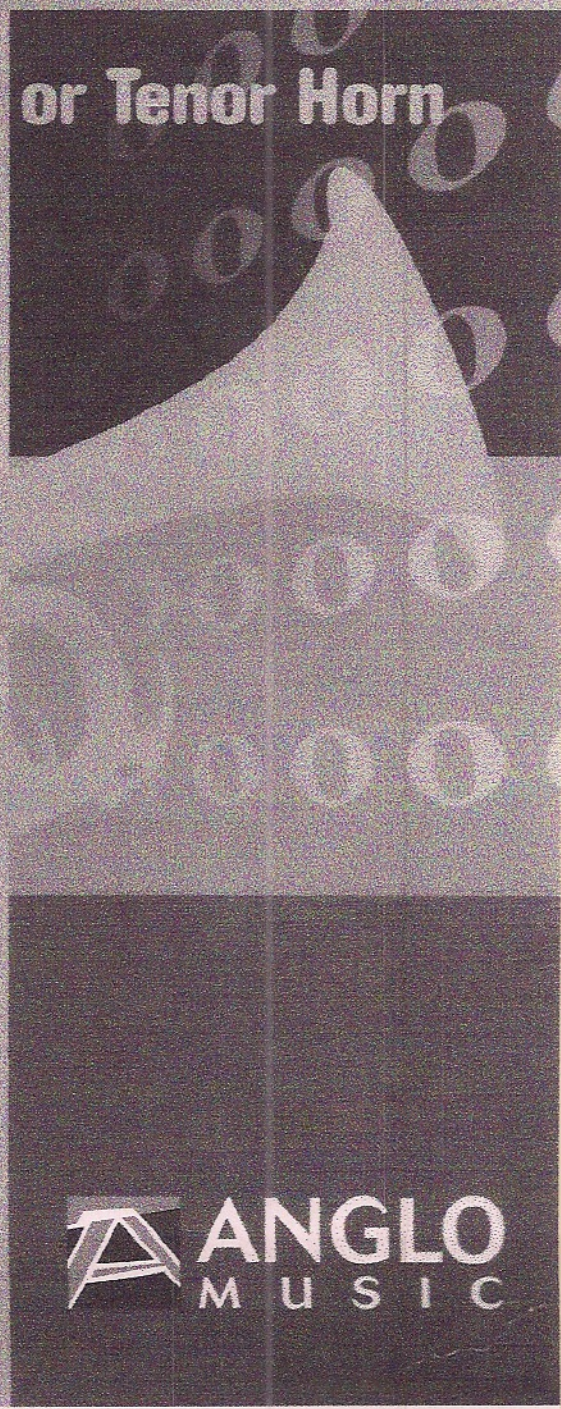


Philip Sparke

# Starter Studies

Progressive Studies

For Trumpet, Cornet, Flugel Horn or Tenor Horn



ANGLO  
MUSIC



# Starter Studies

65 Progressive Studies for  
Trumpet, Cornet, Flugel Horn or Tenor Horn

Philip Sparke

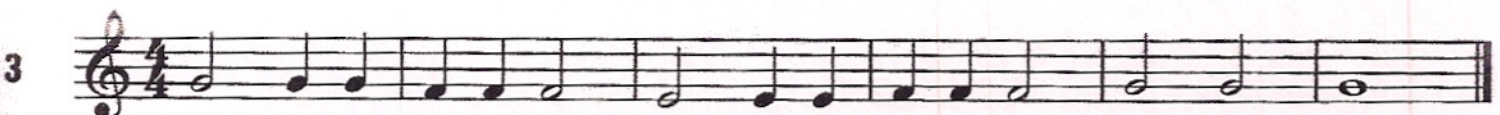
## Gee Whizz



## Two Timer



## One More Time

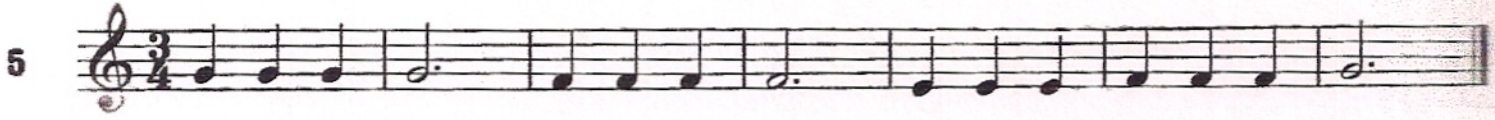




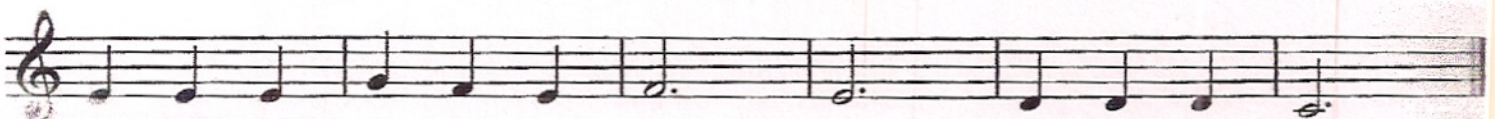
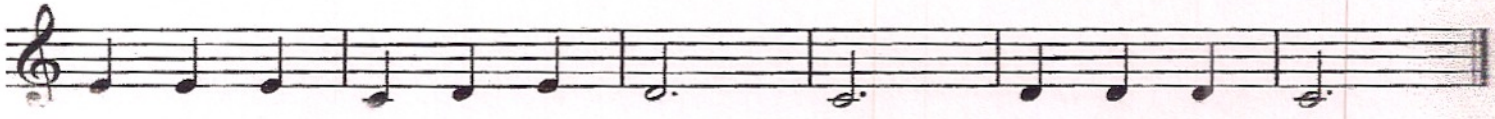
## Down and Up Again



## Three-legged Race



## Once More





## Upside Down

7

Musical notation for the piece 'Upside Down'. It consists of two staves of music in 4/4 time. The first staff begins with a treble clef and a key signature of one flat (Bb). The melody is written in quarter notes, starting on G4 and ending on G4. The second staff continues the melody, ending with a double bar line.

## Soldiers' March

8

Musical notation for the piece 'Soldiers' March'. It consists of two staves of music in 4/4 time. The first staff begins with a treble clef and a key signature of one flat (Bb). The melody is written in quarter notes, starting on G4 and ending on G4. The second staff continues the melody, ending with a double bar line.

## Folk Dance

9

Musical notation for the piece 'Folk Dance'. It consists of two staves of music in 2/4 time. The first staff begins with a treble clef and a key signature of one flat (Bb). The melody is written in quarter notes, starting on G4 and ending on G4. The second staff continues the melody, ending with a double bar line.

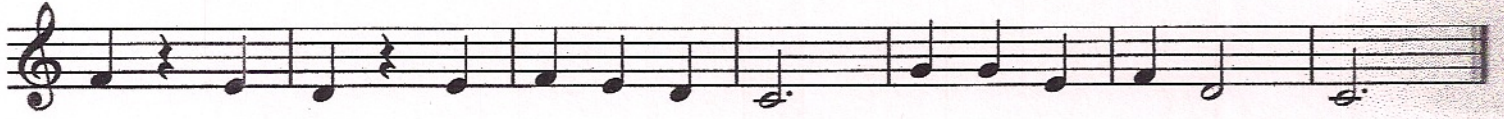
## Give Me a Rest

10

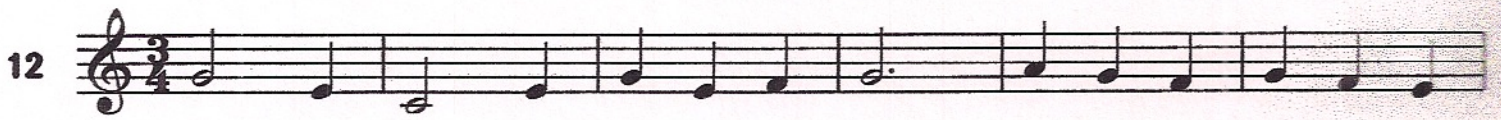
Musical notation for the piece 'Give Me a Rest'. It consists of two staves of music in 2/4 time. The first staff begins with a treble clef and a key signature of one flat (Bb). The melody is written in quarter notes, starting on G4 and ending on G4. The second staff continues the melody, ending with a double bar line.



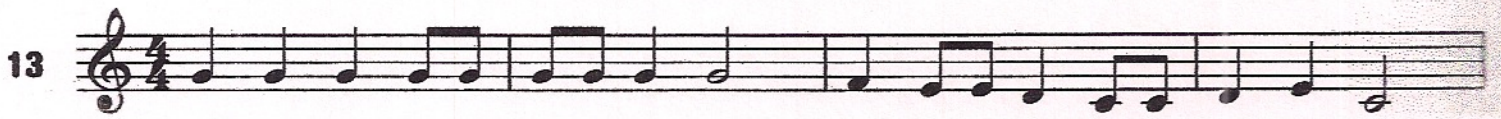
## Breaking Up



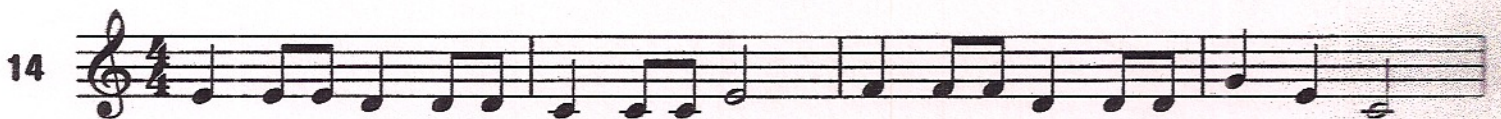
## Willow Waltz



## Fanfare No 1



## Fanfare No 2





## A Tune with No Name

15

Musical notation for 'A Tune with No Name' in 2/4 time. The first staff starts with a treble clef and a 2/4 time signature. The melody consists of quarter and eighth notes. The second staff continues the melody and ends with a double bar line.

## Step by Step

16

Musical notation for 'Step by Step' in 3/4 time. The first staff starts with a treble clef and a 3/4 time signature. The melody consists of quarter and eighth notes. The second staff continues the melody and ends with a double bar line.

## Purple Pineapple

17

Musical notation for 'Purple Pineapple' in 4/4 time. The first staff starts with a treble clef and a 4/4 time signature. The melody consists of quarter and eighth notes. The second staff continues the melody and ends with a double bar line.

## Gavottish

18

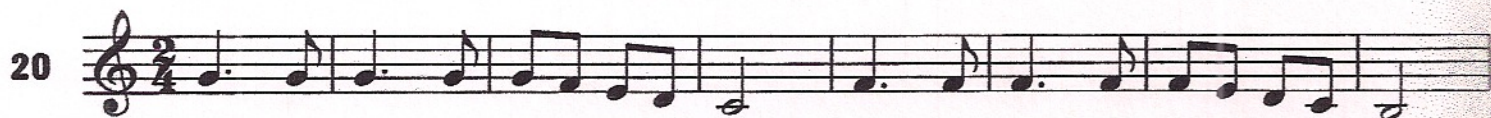
Musical notation for 'Gavottish' in 3/4 time. The first staff starts with a treble clef and a 3/4 time signature. The melody consists of quarter and eighth notes. The second staff continues the melody and ends with a double bar line.



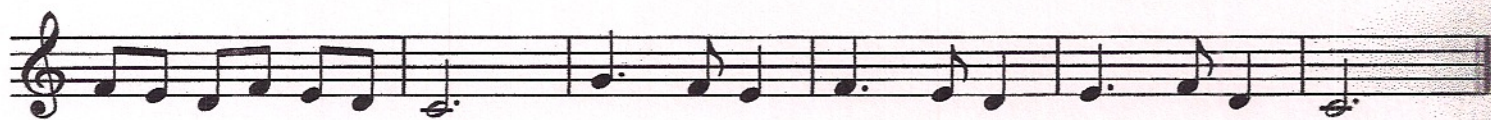
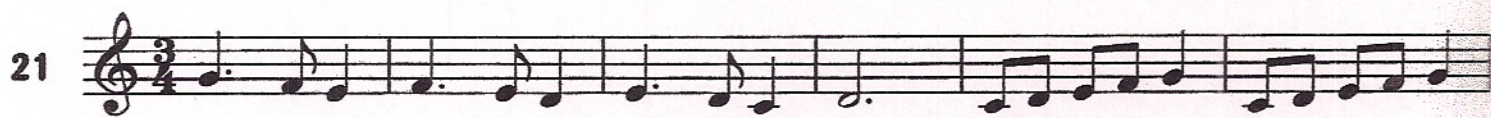
## Loch Ness



## Ben Nevis



## Fresh Air



## Voyager





## Concorde

23

Three staves of musical notation for the piece 'Concorde'. The first staff begins with a treble clef, a 4/4 time signature, and a measure number of 23. The melody consists of eighth and quarter notes. The second staff continues the melody with a quarter rest in the first measure. The third staff concludes the piece with a double bar line.

## Across Chelsea Bridge

24

Three staves of musical notation for the piece 'Across Chelsea Bridge'. The first staff begins with a treble clef, a 3/4 time signature, and a measure number of 24. The melody consists of quarter and eighth notes. The second staff continues the melody. The third staff concludes the piece with a double bar line.

## Rush Hour

25

Three staves of musical notation for the piece 'Rush Hour'. The first staff begins with a treble clef, a 2/4 time signature, and a measure number of 25. The melody consists of quarter and eighth notes. The second staff continues the melody with quarter rests in the first and third measures. The third staff concludes the piece with a double bar line.



## Blue Ballad

26

Musical notation for 'Blue Ballad' starting at measure 26. It consists of three staves of music in 3/4 time. The first staff begins with a treble clef, a key signature of one sharp (F#), and a 3/4 time signature. The melody is written in eighth and quarter notes. The second and third staves continue the melody with similar note values and rests.

## Cruise Control

27

Musical notation for 'Cruise Control' starting at measure 27. It consists of three staves of music in 4/4 time. The first staff begins with a treble clef, a key signature of one sharp (F#), and a 4/4 time signature. The melody is written in eighth and quarter notes. The second and third staves continue the melody with similar note values and rests.

## Number Twenty Eight

28

Musical notation for 'Number Twenty Eight' starting at measure 28. It consists of three staves of music in 4/4 time. The first staff begins with a treble clef, a key signature of one sharp (F#), and a 4/4 time signature. The melody is written in eighth and quarter notes. The second and third staves continue the melody with similar note values and rests.



## Jogging

29

Musical score for 'Jogging' in G major (one sharp) and 2/4 time. It consists of three staves of music. The first staff begins with a treble clef, a key signature of one sharp (F#), and a 2/4 time signature. The melody is composed of eighth and quarter notes, ending with a double bar line.

## Harvest Hymn

30

Musical score for 'Harvest Hymn' in G major (one sharp) and 2/4 time. It consists of three staves of music. The first staff begins with a treble clef, a key signature of one sharp (F#), and a 2/4 time signature. The melody features a mix of quarter and eighth notes, concluding with a double bar line.

## Hesitation Waltz

31

Musical score for 'Hesitation Waltz' in G major (one sharp) and 3/4 time. It consists of three staves of music. The first staff begins with a treble clef, a key signature of one sharp (F#), and a 3/4 time signature. The melody includes quarter notes, eighth notes, and rests, ending with a double bar line.



## Bit by Bit

32

Musical notation for the piece 'Bit by Bit'. It consists of three staves of music in 4/4 time. The first staff begins with a treble clef and a key signature of one flat (Bb). The melody is composed of eighth and quarter notes with occasional rests. The second and third staves continue the melodic line across the piece.

## Spanish Scherzo

33

Musical notation for the piece 'Spanish Scherzo'. It consists of three staves of music in 3/4 time. The first staff begins with a treble clef and a key signature of two flats (Bb, Eb). The melody features a mix of eighth and quarter notes. The second and third staves continue the melodic line.

## Czardas

34

Musical notation for the piece 'Czardas'. It consists of three staves of music in 2/4 time. The first staff begins with a treble clef and a key signature of two flats (Bb, Eb). The melody is characterized by eighth and quarter notes. The second and third staves continue the melodic line.



## Jiggy Jig

35

Musical score for 'Jiggy Jig' in 2/4 time, starting at measure 35. The first staff contains measures 35-37. The second staff contains measures 38-40. The third staff contains measures 41-43. The key signature has one flat (B-flat).

## Pierrot's Polka

36

Musical score for 'Pierrot's Polka' in 3/4 time, starting at measure 36. The first staff contains measures 36-38. The second staff contains measures 39-41. The third staff contains measures 42-44. The key signature has one flat (B-flat).

## Highland March

37

Musical score for 'Highland March' in 4/4 time, starting at measure 37. The first staff contains measures 37-39. The second staff contains measures 40-42. The third staff contains measures 43-45. The key signature has one flat (B-flat).



## Bluebird's Ballad

38

Musical notation for 'Bluebird's Ballad' starting at measure 38. The piece is in 3/4 time and consists of three staves of music. The melody is written in treble clef and features a mix of quarter, eighth, and half notes, with some notes beamed together and others held over. The key signature is one flat (B-flat).

## Simple Serenade

39

Musical notation for 'Simple Serenade' starting at measure 39. The piece is in 3/4 time and consists of three staves of music. The melody is written in treble clef and features a mix of quarter, eighth, and half notes, with some notes beamed together and others held over. The key signature is one flat (B-flat).

## Dance of the Dolls

40

Musical notation for 'Dance of the Dolls' starting at measure 40. The piece is in 2/4 time and consists of three staves of music. The melody is written in treble clef and features a mix of quarter, eighth, and sixteenth notes, with some notes beamed together and others held over. The key signature is one flat (B-flat).



## Nearly Bobby Shaftoe

41

Musical notation for the piece 'Nearly Bobby Shaftoe'. It consists of three staves of music in a 4/4 time signature with a key signature of one flat (B-flat). The first staff begins with a treble clef and a key signature of one flat. The melody is written in a single line across three staves, featuring a mix of eighth and sixteenth notes, with some triplet-like patterns. The piece concludes with a double bar line.

## Scottish Air

42

Musical notation for the piece 'Scottish Air'. It consists of three staves of music in a 3/4 time signature with a key signature of one sharp (F#). The first staff begins with a treble clef and a key signature of one sharp. The melody is written in a single line across three staves, featuring a mix of quarter and eighth notes, with some slurs. The piece concludes with a double bar line.

## Ghost Town

43

Musical notation for the piece 'Ghost Town'. It consists of three staves of music in a 2/4 time signature with a key signature of one flat (B-flat). The first staff begins with a treble clef and a key signature of one flat. The melody is written in a single line across three staves, featuring a mix of quarter and eighth notes, with some slurs. The piece concludes with a double bar line.



## Sad March

44

Musical notation for the piece "Sad March", measures 44-46. The music is written in treble clef with a 4/4 time signature. Measure 44 begins with a treble clef and a key signature of one sharp (F#). The melody consists of quarter and eighth notes, with a half note in measure 45. Measure 46 concludes with a double bar line.

## Wednesday Waltz

45

Musical notation for the piece "Wednesday Waltz", measures 45-47. The music is written in treble clef with a 3/4 time signature and a key signature of one sharp (F#). Measure 45 begins with a treble clef and a key signature of one sharp. The melody is characterized by eighth-note patterns. Measure 47 concludes with a double bar line.

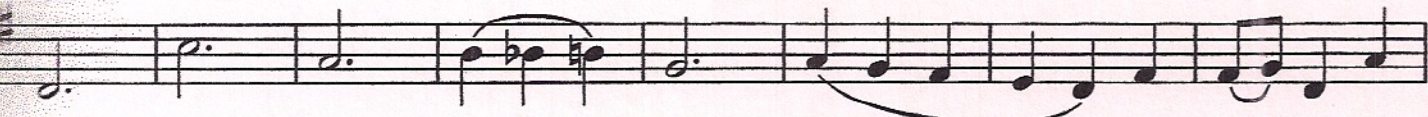
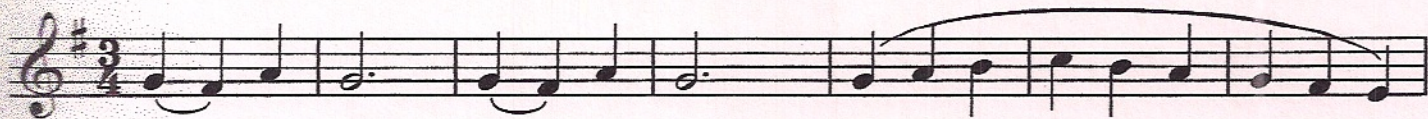
## Baroque Ballad

46

Musical notation for the piece "Baroque Ballad", measures 46-48. The music is written in treble clef with a 4/4 time signature. Measure 46 begins with a treble clef and a key signature of one sharp (F#). The melody features sixteenth-note patterns. Measure 48 concludes with a double bar line.



# Love Song



# Some Scales

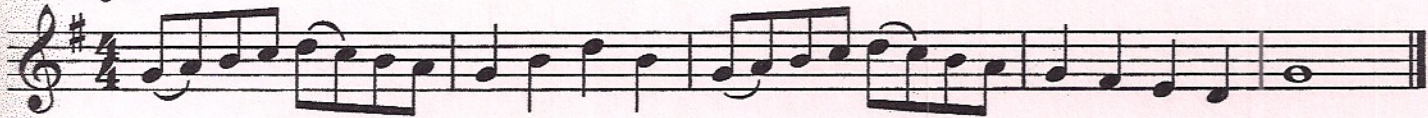
C major



A minor



G major



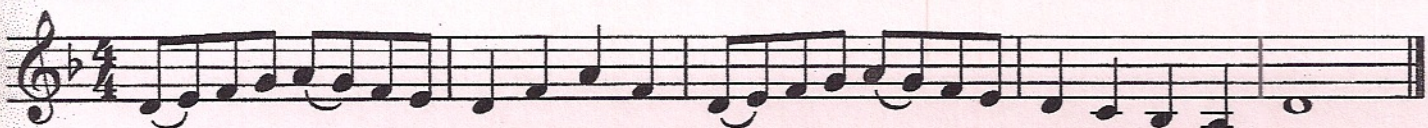
E minor



F major



D minor





# Dynamic Exercise

54

*f* *p* *f* *p* *f* *p*

*f* *p* *f* *p* *f* *p*

*f* *p* *f* *p* *f* *p*

# The Blue Danube

55

*p* *f* *p* *f* *p*

*p* *f* *p* *f* *p*

*f* *p* *f* *p* *f* *p*

# All's Well

56

*p* *f* *p* *f* *p* *f*

*p* *f* *p* *f* *p* *f*

*p* *f* *p* *f* *p* *f*



## Alpenhorn Echoes

57

*f* *p* *f*  
*p* *f* *p* *f*  
*p* *f*

## Sunday Scherzo

58

*f* *p*  
*f* *p* *f* *p*  
*cresc.* *f*

## Carol

59

*p* *p*  
*cresc.* *f*  
*f* *p*



## The Long Road Home

Musical score for "The Long Road Home" in 4/4 time, featuring four staves of music. The first staff is in treble clef with a key signature of one flat (Bb) and dynamic markings of *mf*, *f*, and *f*. The second and third staves are in bass clef with a key signature of one flat (Bb) and dynamic markings of *p* and *p*. The fourth staff is in bass clef with a key signature of one flat (Bb) and dynamic markings of *f*, *p*, and *f*. The music includes various note values, rests, and slurs.

## Water Music

Musical score for "Water Music" in 3/4 time, featuring four staves of music. The first staff is in treble clef with a key signature of one sharp (F#) and a dynamic marking of *f*. The second and third staves are in bass clef with a key signature of one sharp (F#) and dynamic markings of *p* and *f*. The fourth staff is in bass clef with a key signature of one sharp (F#) and dynamic markings of *p* and *f*. The music includes various note values, rests, and slurs.



# Music Box Waltz

62

*mp* *p* *mf* *f* *mp cresc.* *f* *mp cresc.* *f*

Detailed description: This block contains the first four staves of music for 'Music Box Waltz', starting at measure 62. The music is in 3/4 time. The first staff begins with a mezzo-piano (*mp*) dynamic and features a melodic line with a slur over two measures and a crescendo hairpin. The second staff continues the melody with a mezzo-forte (*mf*) dynamic. The third staff shows a fortissimo (*f*) dynamic followed by a mezzo-piano crescendo (*mp cresc.*). The fourth staff concludes with a fortissimo (*f*) dynamic, a mezzo-piano crescendo (*mp cresc.*), and ends with a fortissimo (*f*) dynamic.

# Ragtime

63

*f* *p* *f* *p* *f* *f*

Detailed description: This block contains the first four staves of music for 'Ragtime', starting at measure 63. The music is in 2/4 time. The first staff begins with a fortissimo (*f*) dynamic. The second staff starts with a piano (*p*) dynamic and ends with a fortissimo (*f*) dynamic. The third staff starts with a piano (*p*) dynamic and ends with a fortissimo (*f*) dynamic. The fourth staff starts with a fortissimo (*f*) dynamic and ends with a fortissimo fortissimo (*ff*) dynamic.



# Men of Harlech

64

The musical score for 'Men of Harlech' measures 64-67 consists of four staves of music in 4/4 time. The first staff (measure 64) begins with a *mf* dynamic and features a melodic line with a crescendo leading to a *mf* dynamic at the end. The second staff (measure 65) starts with a *f* dynamic, followed by a *p* dynamic, and ends with a *mf* dynamic. The third staff (measure 66) begins with a *cresc.* marking and a *f* dynamic. The fourth staff (measure 67) starts with a *p* dynamic and ends with a *f* dynamic.

# Footsteps

65

The musical score for 'Footsteps' measures 65-68 consists of four staves of music in 2/4 time. The first staff (measure 65) begins with a *f* dynamic, followed by a *p* dynamic, a *f* dynamic, and a *p* dynamic. The second staff (measure 66) starts with a *f* dynamic and ends with a *p* dynamic. The third staff (measure 67) begins with a *f* dynamic, followed by a *mf* dynamic, a *p* dynamic, and a *f* dynamic. The fourth staff (measure 68) starts with a *p* dynamic and ends with a *f* dynamic.